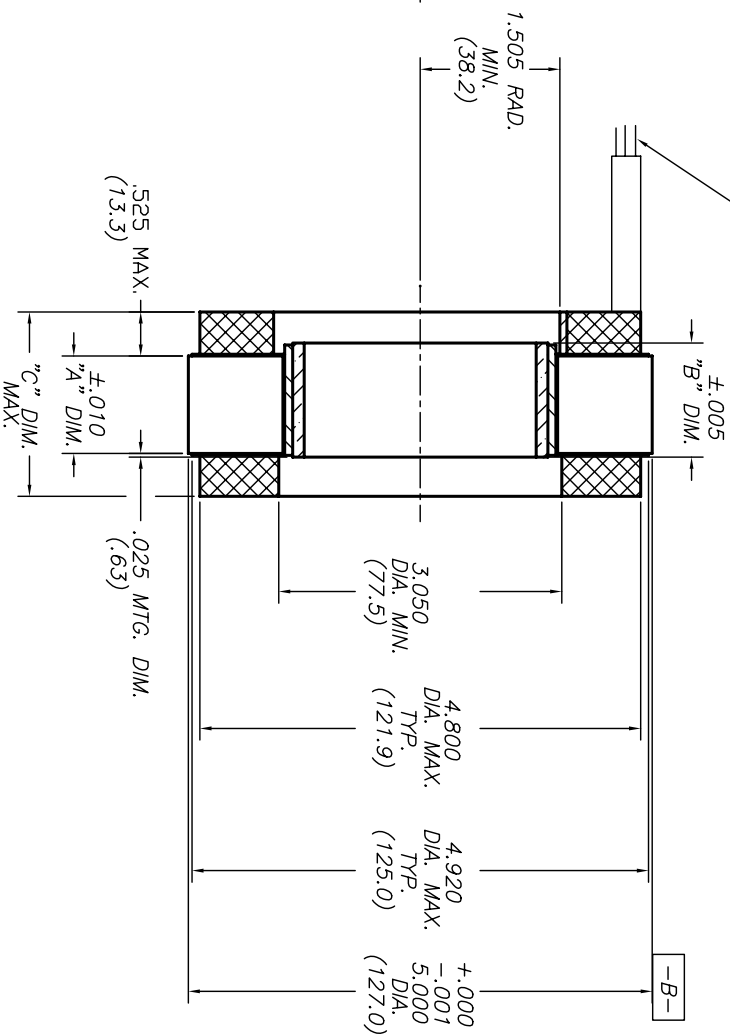
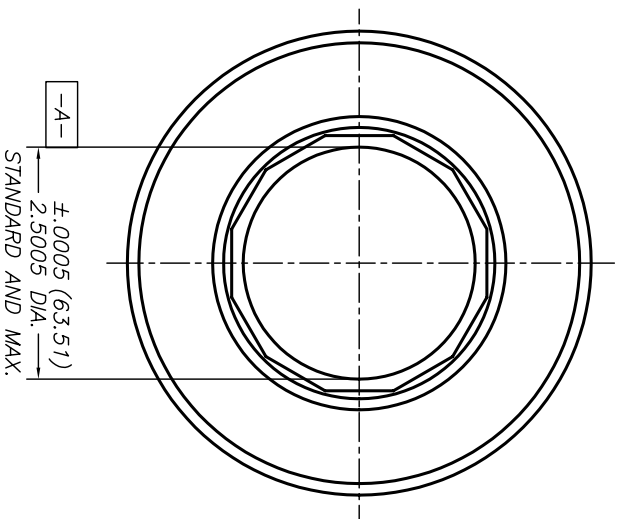


MODEL	"A" DIM.	"B" DIM.	"C" DIM.
HT05000	.250(6.4)	.430(10.9)	1.187(30.2)
HT05001	.650(16.6)	.830(21.1)	1.587(40.3)
HT05002	1.050(26.7)	1.230(31.3)	1.987(50.5)
HT05003	1.450(36.9)	1.630(41.4)	2.387(60.6)
HT05004	1.850(47.0)	2.030(51.6)	2.787(70.8)
HT05005	2.250(57.2)	2.430(61.8)	3.187(80.9)



LEADWIRE - TEFLON COATED  
 TYPE "E" PER MIL-W-16878/4  
 12" MINIMUM LENGTH  
 A) MOTOR: # 18 AWG. RED(A), WHI(B), BLK(C).  
 B) SENSOR: #28 AWG. BLU(+), BRN(A), ORG(B),  
 YEL(C), GRN(GRD)

REVISION			DATE	APPROVED
ECN	LTR		6/97	BWT
---	B	REVISE AND REDRAW		

- MOTOR SUPPLIED AS TWO SEPARATE COMPONENTS, ROTOR ASSEMBLY AND STATOR ASSEMBLY.
- DIAMETERS "A" AND "B" TO BE CONCENTRIC WITHIN .002 WHEN MOUNTED.
- MOUNTING SURFACE BETWEEN 5.000 AND 4.920 DIAMETERS ON BOTH SIDES.

UNLESS OTHERWISE SPECIFIED DIMENSIONS ARE IN INCHES TOLERANCES ON		DRAWN BY		DATE
ANGLES	3 PLACE	BWT		6/97
±.030	DEC ±.005	CHECKER:		
	DEC ±.01	ENGINEER:		
MATERIAL		CUSTOMER:		
DO NOT SCALE		DRAWING NUMBER		
FINISH		HT05000-X0X		
SCALE		SHEET		

**Emotek Corp**  
 10002-B East 43rd St. South  
 TULSA, OK 74148

OUTLINE DRAWING  
 FRAMELESS MOTOR

DWG IDENTIFICATION NUMBER 00214  
 DRAWING NUMBER HT05000-X0X  
 SCALE SHEET OF