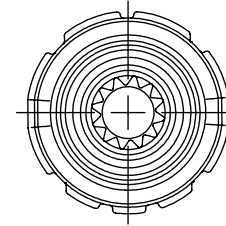
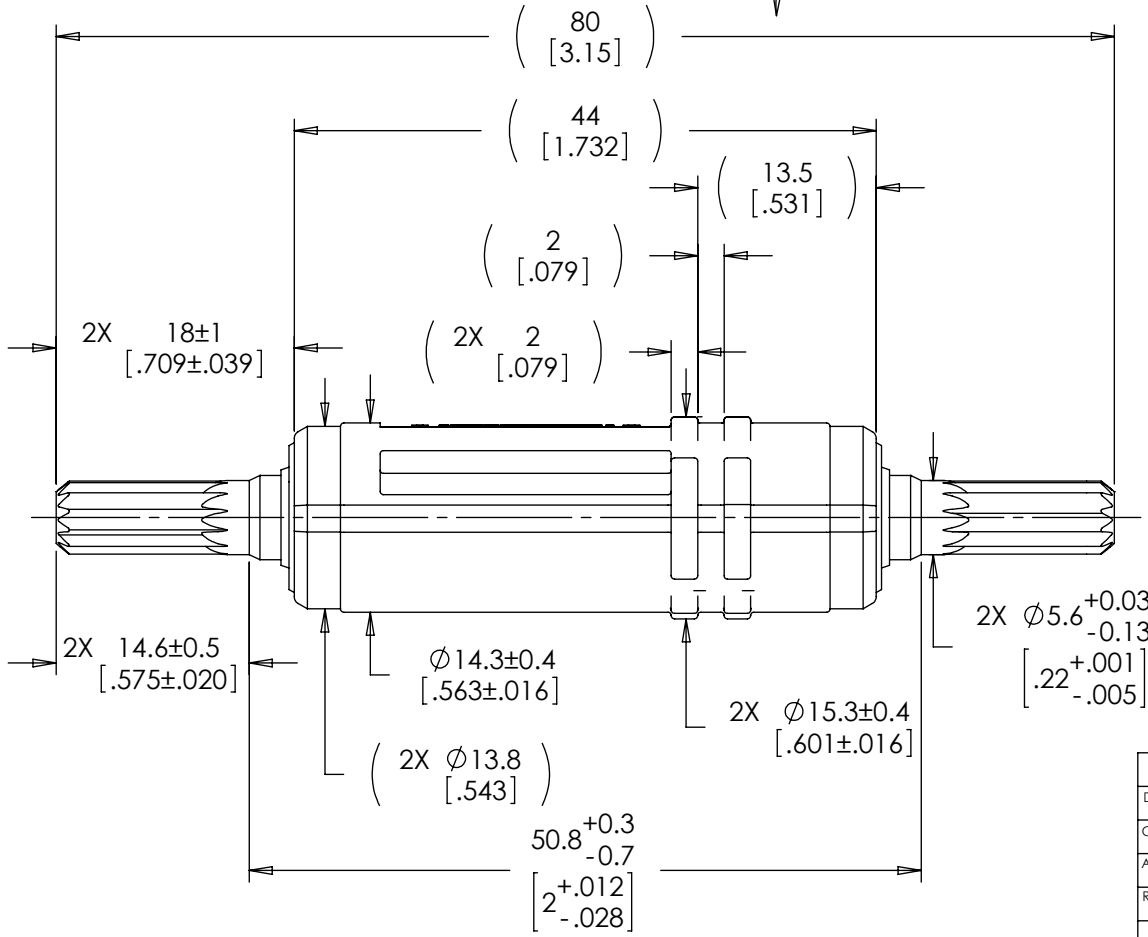


PART NUMBER	CCW HIGH STATIC TORQUE			CW LOW STATIC TORQUE		
	NOMINAL		INITIAL TOLERANCE	NOMINAL		INITIAL TOLERANCE
	Nm	LB-IN	+/- %	Nm	LB-IN	+/- %
80146-040	4.0	35.4	12	2.50	22.1	20
80146-050	5.0	44.3	12	3.13	27.7	20
80146-060	6.0	53.1	12	3.75	33.2	20
80146-070	7.0	62.0	12	4.38	38.7	20
80146-080	8.0	70.8	12	5.00	44.3	20

NOTES:

- DESIGNED TO BE INSERT MOLDED INTO GLASS FILLED NYLON WITH 17mm OD. DO NOT PREHEAT INSERT. DO NOT CYCLE MOLDED HINGE LEAVES UNTIL PLASTIC IS FULLY CURED -16 HOURS MIN.
- LIFE: 10,000 CYCLES MIN. ONE CYCLE CONSISTS OF 180° OPEN AND 180° CLOSED.
- AVAILABLE TORQUE: SEE TABULATION
- APPLICATION CONDITIONS REFERENCE. USER MUST DETERMINE FITNESS FOR USE IN APPLICATION. APPLICATIONS NORMALLY EXPERIENCE AN ADDITIONAL 10% VARIATION IN TORQUE AFTER MOLDING AND OVER LIFE. DYNAMIC TORQUE IS NORMALLY WITHIN 10% OF STATIC TORQUE.



THIS PRINT IS THE CONFIDENTIAL PROPERTY OF REELL PRECISION MFG.  
THIRD ANGLE PROJECTION

LEVEL	DESCRIPTION		DRAWN	DATE	APPROVED
DRAWN:	DDF	DATE: 11-22-05	PART NO.: 80146-XXX		
CHECKED:	TDN	DATE: 6-7-06	TITLE: ReellTorq INSERT		
APPROVED:	TDN	DATE: 6-7-06	DESCRIPTION: T1200 1444		
REVISED:	9-22-10	DIMS: mm[IN]	REV: D		
		REELL PRECISION MANUFACTURING 1259 WILLOW LAKE BOULEVARD SAINT PAUL, MINNESOTA 55110-5103, USA		SCALE: 1.75:1	DO NOT SCALE DRAWING
					SHEET 1 OF 1