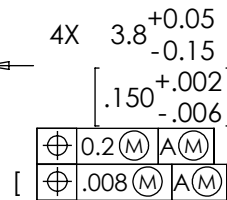
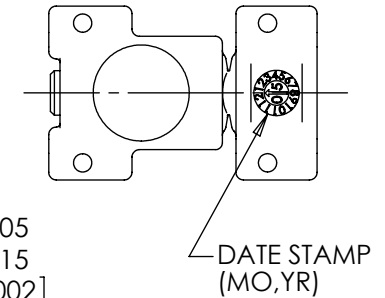
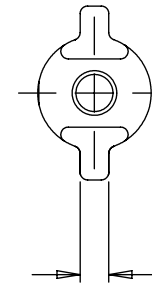
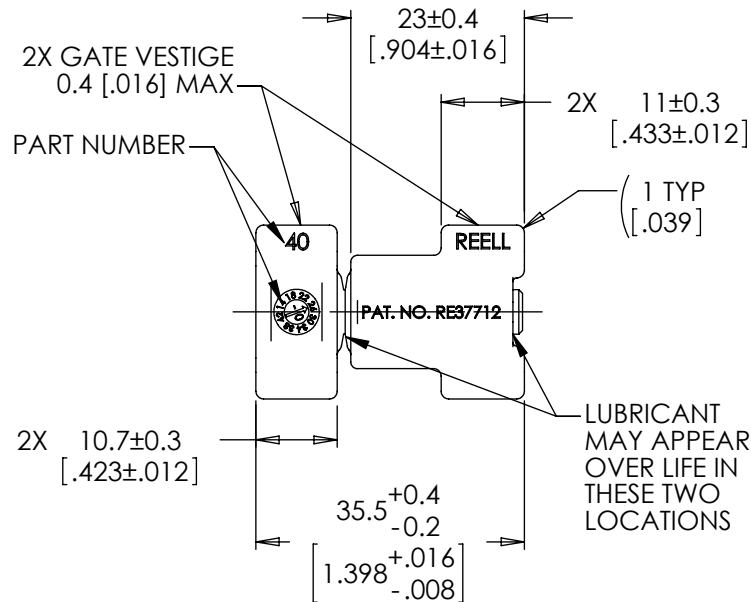
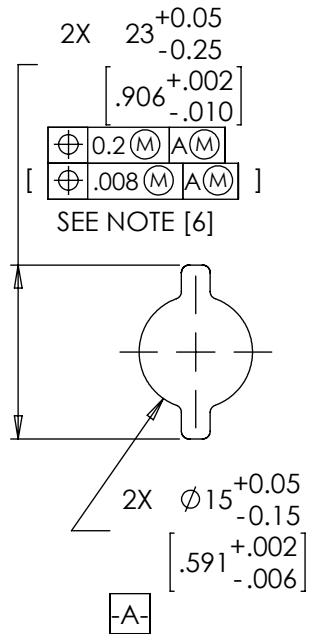


PART NUMBER	STATIC TORQUE		
	NOMINAL		TOLERANCE
	Nm	Lb-In	+/- %
40-014	1.40	12.40	30
40-018	1.80	15.90	25
40-022	2.20	19.50	20
40-026	2.60	23.00	20
40-030	3.00	26.60	20
40-034	3.40	30.10	20
40-038	3.80	33.60	20
40-042	4.20	37.20	20

NOTES:

1. USER MUST DETERMINE FITNESS FOR USE IN APPLICATION.
2. LIFE: 20,000 CYCLES.  
ONE CYCLE = 180° OPEN/180° CLOSED.  
FIVE(5) CYCLES PER MINUTE MAX.
3. MATERIAL:  
BRACKET AND SHAFT END ARE ENGINEERED PLASTIC  
SHAFT AND TORQUE ELEMENT ARE HARDENED STEEL
4. TABS ON HINGE TO BE ALIGNED AS SHOWN ±5°.
5. DYNAMIC TORQUE IS NORMALLY WITHIN 10% OF STATIC TORQUE.

[6] MEASURE OFF GATE VESTIGE.



SPECIFICATIONS SUBJECT TO CHANGE

LEVEL	DESCRIPTION	DRAWN	DATE	APPROVED
DRAWN:	HMA	DATE:	4-27-99	PART NO: <b>40-XXX</b>
CHECKED:	HMA	DATE:	10-31-00	
APPROVED:	DAW	DATE:	10-31-00	
REVISED:	10-13-10	DIMS:	mm[IN]	
CONSISTENT WITH ASME Y14.5M-1994 THIS PRINT IS THE CONFIDENTIAL PROPERTY OF REELL PRECISION MFG. THIRD ANGLE PROJECTION				TITLE: <b>ReellTorq INSERT</b>
				DESCRIPTION: <b>T1100 1523</b>
REELL PRECISION MANUFACTURING 1259 WILLOW LAKE BOULEVARD SAINT PAUL, MINNESOTA 55110-5103, USA		SCALE: 1:1	DO NOT SCALE DRAWING	SHEET 1 OF 1