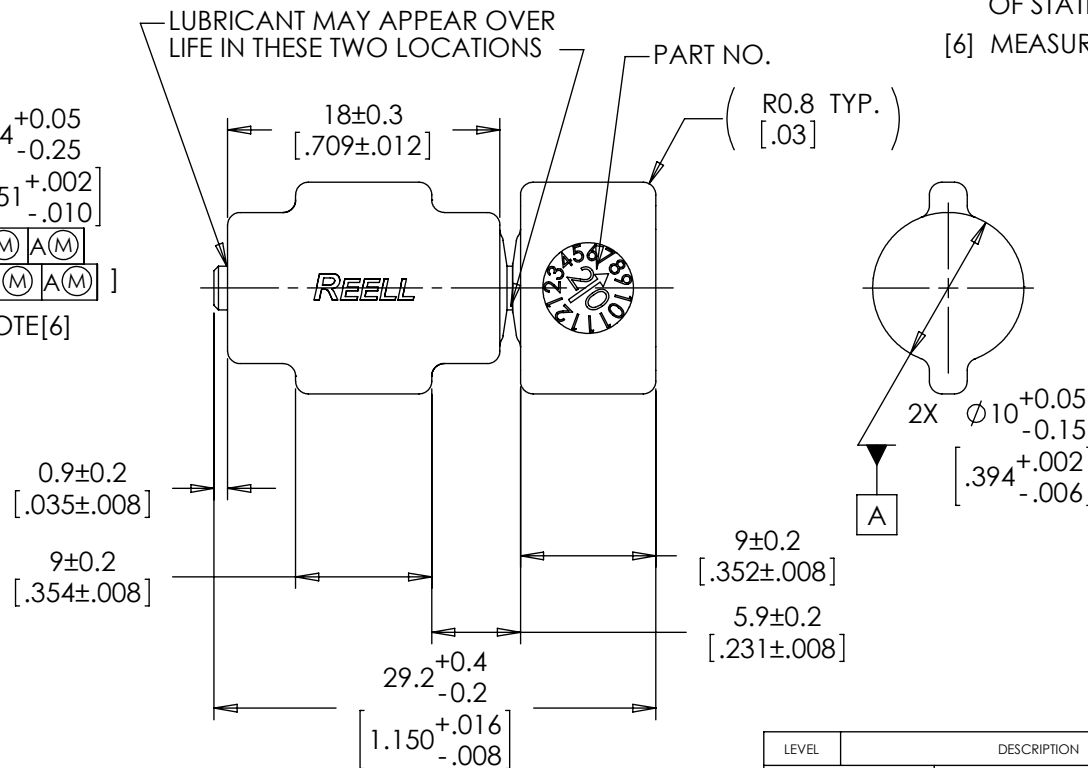
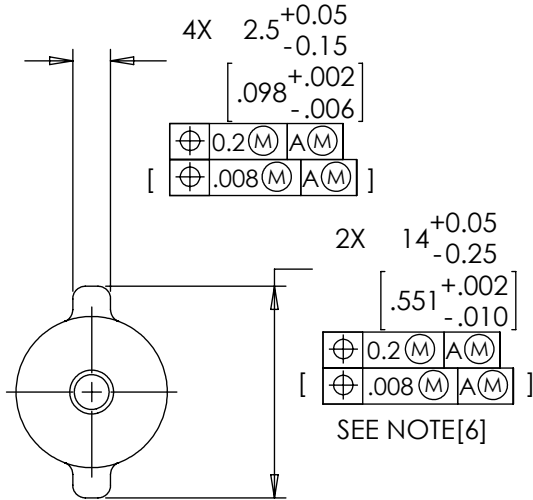


PART NUMBER	STATIC TORQUE		
	NOMINAL		TOLERANCE
	Nm	Lb-In	+/- %
20-002	0.25	2.20	45
20-003	0.35	3.10	35
20-004	0.50	4.40	25
20-006	0.65	5.80	20
20-008	0.80	7.10	20
20-010	1.00	8.90	20
20-012	1.20	10.60	20

NOTES:

1. USER MUST DETERMINE FITNESS FOR USE IN APPLICATION.
2. LIFE: 25,000 CYCLES.  
ONE CYCLE = 180° OPEN/180° CLOSED.  
FIVE(5) CYCLES PER MINUTE MAX.
3. MATERIAL:  
BRACKET AND SHAFT END ARE ENGINEERED PLASTIC  
SHAFT AND TORQUE ELEMENT ARE HARDENED STEEL
4. TABS ON HINGE TO BE ALIGNED AS SHOWN ±5°.
5. DYNAMIC TORQUE IS NORMALLY WITHIN 10% OF STATIC TORQUE.
- [6] MEASURE OFF GATE VESTIGE.



SPECIFICATION SUBJECT TO CHANGE

LEVEL	DESCRIPTION	DRAWN	DATE	APPROVED
DRAWN:	DDF	DATE:	11-8-01	PART NO. 20-XXX TITLE: ReellTorq INSERT DESCRIPTION: T1100 1018 SCALE: 2:1 DO NOT SCALE DRAWING
CHECKED:	GDL	DATE:	1-4-05	
APPROVED:	GDL	DATE:	1-4-05	
REVISED:	10-11-10	DIMS:	mm[IN]	
INTERPRET PRINT PER ASME Y14.5M-1994 THIS PRINT IS THE CONFIDENTIAL PROPERTY OF REELL PRECISION MFG. THIRD ANGLE PROJECTION				
REELL PRECISION MANUFACTURING 1259 WILLOW LAKE BOULEVARD SAINT PAUL, MINNESOTA 55110-5103, USA				
				REV: L
				SHEET 1 OF 1