

NOTES: 1.

| HIGH TORQUE         | CCW      | CW       |
|---------------------|----------|----------|
|                     | PART NO. | PART NO. |
| [13.3] Lb-in 1.5 Nm | 11-503   | 11-504   |
| [22.1] Lb-in 2.5 Nm | 11-505   | 11-506   |
| [31] Lb-in 3.5 Nm   | 11-507   | 11-508   |
| [39.8] Lb-in 4.5 Nm | 11-509   | 11-510   |
| [44.3] Lb-in 5 Nm   | 11-501   | 11-502   |
| [48.7] Lb-in 5.5 Nm | 11-511   | 11-512   |

2. TORQUE LOW IS 65% OF HIGH TORQUE

TORQUE RANGE PER DIRECTION CONFIGURATION:  
 STATIC HIGH TORQUE TOLERANCE  $\pm 20\%$   
 STATIC LOW TORQUE TOLERANCE  $\pm 30\%$

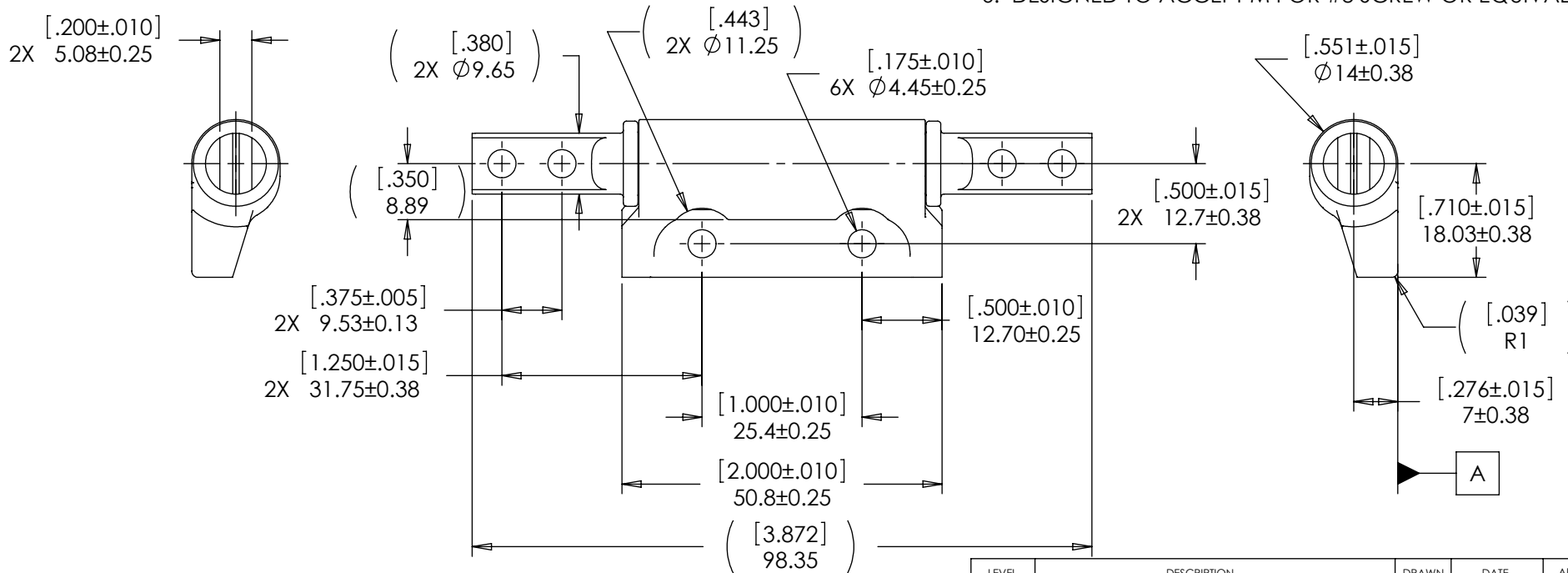
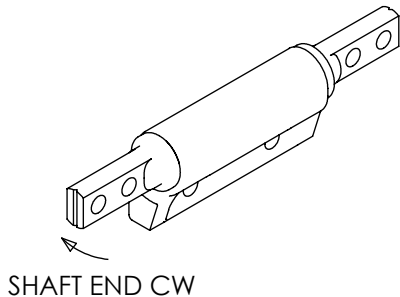
DYNAMIC TORQUE IS NORMALLY WITHIN 10% OF STATIC TORQUE.

3. LIFE: 20,000 CYCLES WHEN DUTY CYCLES IS LESS THAN 10% AND ROTATIONAL SPEED IS LESS THAN 100 RPM. 30 SECONDS MAXIMUM CONTINUOUS ACTUATION.

4. SHAFT END TO BE ORIENTED  $90^\circ \pm 5^\circ$  AS SHOWN WITH RESPECT TO DATUM A.

5. USER MUST DETERMINE FITNESS FOR USE IN APPLICATION.

6. DESIGNED TO ACCEPT M4 OR #8 SCREW OR EQUIVALENT.



SPECIFICATION SUBJECT TO CHANGE

THIS PRINT IS THE CONFIDENTIAL PROPERTY OF REELL PRECISION MFG.  
 THIRD ANGLE PROJECTION

| LEVEL  | DESCRIPTION   | DRAWN                                  | DATE                 | APPROVED     |
|--|---------------|--|----------------------|--------------|
| DRAWN: DDF   | DATE: 4-14-05 | REFERENCE: APPL: 11-5XX                |                      |              |
| CHECKED: TWJ   | DATE: 4-26-05 | DESIGNER: TIM JENUM                    |                      |              |
| APPROVED: TWJ  | DATE: 4-26-05 | TYPE: SALES DRAWING                    |                      |              |
| REVISED: 11-03-10  | DIMS: [IN]mm  | TITLE: POSITIONING HINGE STRAIGHT DUAL |                      |              |
| REELL PRECISION MANUFACTURING<br>1259 WILLOW LAKE BOULEVARD<br>SAINT PAUL, MINNESOTA 55110-5103, USA |               | PART NO: PHK SERIES                    | REV: G               |              |
|  |               | SCALE: 1:1                             | DO NOT SCALE DRAWING | SHEET 1 OF 1 |