

NOTES:

|                     | HIGH TORQUE | CCW LEFT | CW RIGHT | CW LEFT  | CCW RIGHT |
|---------------------|-------------|----------|----------|----------|-----------|
|                     |             | PART NO. | PART NO. | PART NO. | PART NO.  |
| [13.3] Lb-in 1.5 Nm |             | 11-003   | 11-103   | 11-004   | 11-104    |
| [22.1] Lb-in 2.5 Nm |             | 11-005   | 11-105   | 11-006   | 11-106    |
| [31] Lb-in 3.5 Nm   |             | 11-007   | 11-107   | 11-008   | 11-108    |
| [35.4] Lb-in 4 Nm   |             | 11-013   | 11-113   | 11-014   | 11-114    |
| [39.8] Lb-in 4.5 Nm |             | 11-009   | 11-109   | 11-010   | 11-110    |
| [44.3] Lb-in 5 Nm   |             | 11-001   | 11-101   | 11-002   | 11-102    |
| [48.7] Lb-in 5.5 Nm |             | 11-011   | 11-111   | 11-012   | 11-112    |

2. TORQUE LOW IS 65% OF HIGH TORQUE

TORQUE RANGE PER DIRECTION CONFIGURATION:  
 STATIC HIGH TORQUE TOLERANCE ±20%  
 STATIC LOW TORQUE TOLERANCE ±30%

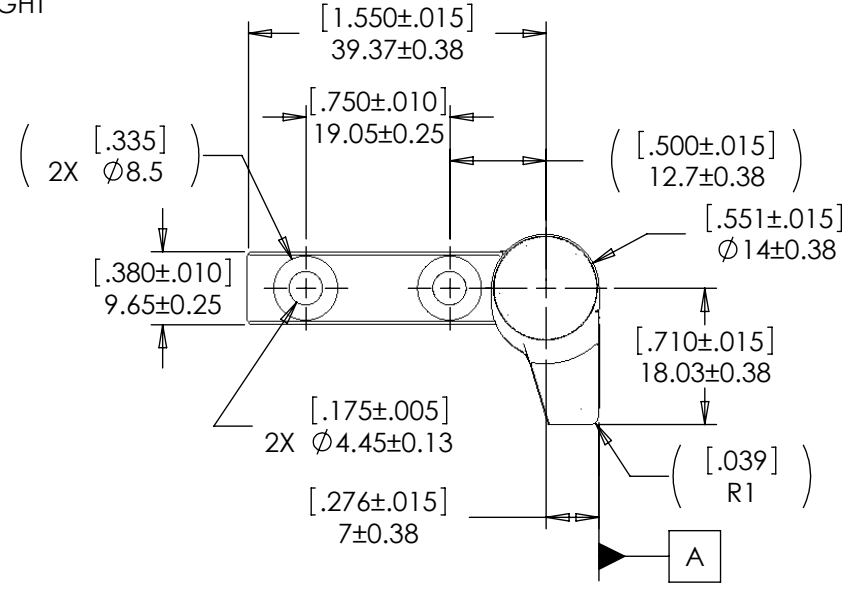
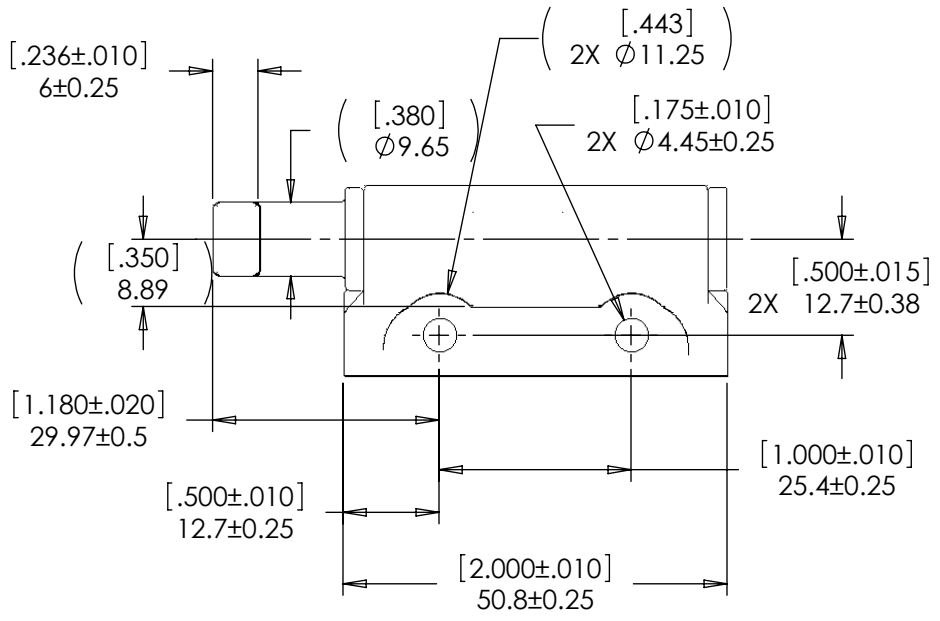
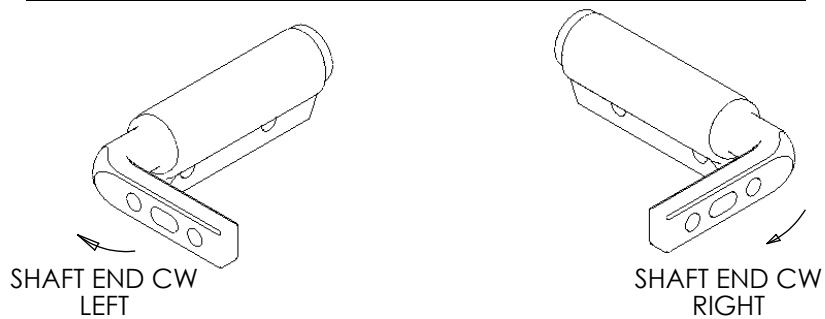
DYNAMIC TORQUE IS NORMALLY WITHIN 10% OF STATIC TORQUE.

3. LIFE: 20,000 CYCLES WHEN DUTY CYCLES IS LESS THAN 10% AND ROTATIONAL SPEED IS LESS THAN 100 RPM. 30 SECONDS MAXIMUM CONTINUOUS ACTUATION.

4. SHAFT END TO BE ORIENTED 90° ±5° AS SHOWN WITH RESPECT TO DATUM A.

5. USER MUST DETERMINE FITNESS FOR USE IN APPLICATION.

6. DESIGNED TO ACCEPT M4 OR #8 SCREW OR EQUIVALENT.



| LEVEL               | DESCRIPTION | DRAWN                | DATE    | APPROVED                                    |
|---------------------|-------------|----------------------|---------|---|
| DRAWN:              | DDF         | DATE:                | 4-14-05 | REFERENCE: APPL: 11-0XX-1XX                 |
| CHECKED:            | TWJ         | DATE:                | 4-26-05 | DESIGNER: TIM JENUM                         |
| APPROVED:           | TWJ         | DATE:                | 4-26-05 | TYPE: SALES DRAWING                         |
| REVISED:            | 11-9-10     | DIMS:                | [IN]mm  | TITLE: POSITIONING HINGE 90° LEFT AND RIGHT |
| PART NO: PHK SERIES |             |                      |         | REV: F                                      |
| SCALE: 1:1          |             | DO NOT SCALE DRAWING |         | SHEET 1 OF 1                                |

INTERPRET PRINT PER ASME Y14.5M-1994  
 THIS PRINT IS THE CONFIDENTIAL PROPERTY OF REELL PRECISION MFG.  
 THIRD ANGLE PROJECTION



SPECIFICATION SUBJECT TO CHANGE