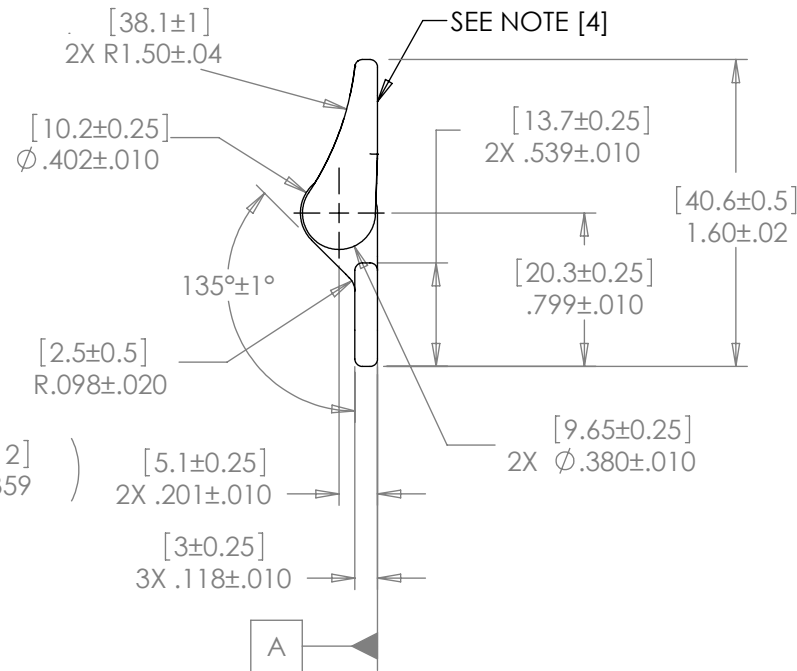
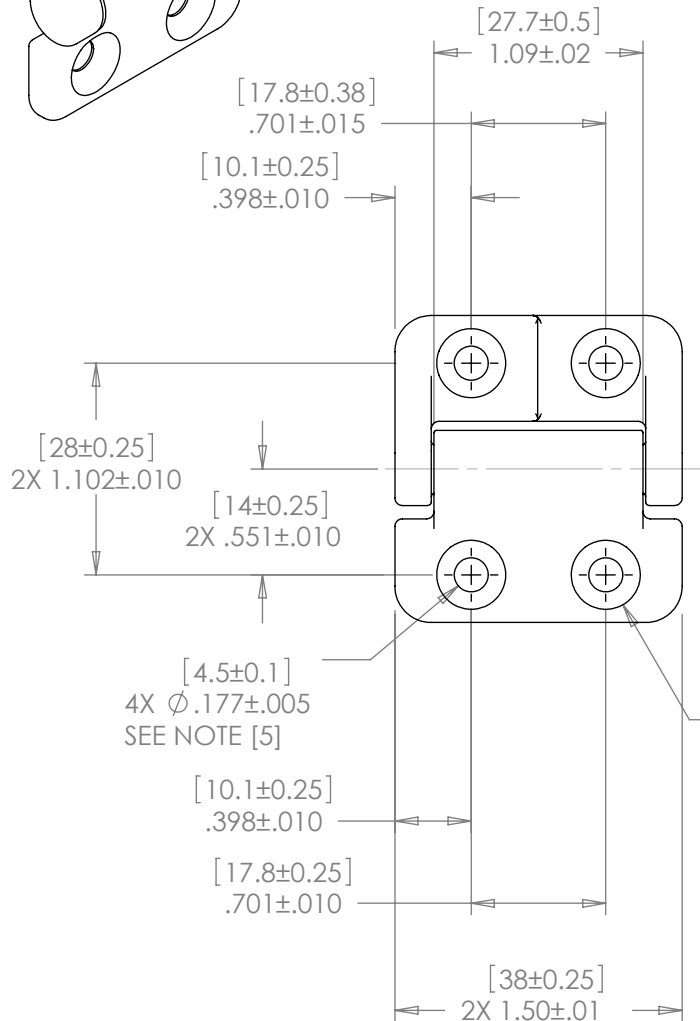


NOTES: 1.

TORQUE	PLAIN	BLACK
[INCHES] mm	PART NO.	PART NO.
[0] Lb-in 0.0 Nm	28-000	28-100
[3.9] Lb-in 0.44 Nm	28-004	28-104
[6.9] Lb-in 0.78 Nm	28-008	28-108
[10.8] Lb-in 1.22 Nm	28-012	28-112
[13.9] Lb-in 1.57 Nm	28-016	28-116
[17.8] Lb-in 2.01 Nm	28-020	28-120
[20.8] Lb-in 2.35 Nm	28-024	28-124
[24.7] Lb-in 2.79 Nm	28-030	28-130

- TORQUE TOLERANCE: $\pm 20\%$
- LIFE: 20,000 CYCLES WHEN DUTY CYCLE IS LESS THAN 10% AND ROTATIONAL SPEED IS LESS THAN 100 RPM. 30 SECONDS MAXIMUM CONTINUOUS ACTUATION.
- FLATS TO BE ORIENTED $\pm 5^\circ$ WITH RESPECT TO DATUM A AS SHOWN.
- DESIGNED TO ACCEPT M4 OR #8 SCREW OR EQUIVALENT
- USER MUST DETERMINE FITNESS FOR USE IN APPLICATION



SPECIFICATIONS SUBJECT TO CHANGE

LEVEL	DESCRIPTION	DRAWN	DATE	APPROVED
DRAWN:	HMA	DATE:	3-1-02	PART NO: 28-XXX TITLE: POSITIONING HINGE DESCRIPTION: PHC SERIES WITH COUNTERSINKS
CHECKED:	HMA	DATE:	3-1-02	
APPROVED:	TWJ	DATE:	3-14-02	
REVISED:	3-15-10	DIMS:	[mm]IN	
INTERPRET PRINT PER ASME Y14.5M-1994 THIS PRINT IS THE CONFIDENTIAL PROPERTY OF REELL PRECISION MFG. THIRD ANGLE PROJECTION				REV: E
REELL PRECISION MANUFACTURING 1259 WILLOW LAKE BOULEVARD SAINT PAUL, MINNESOTA 55110-5103, USA		SCALE: 1:1	DO NOT SCALE DRAWING	SHEET 1 OF 1