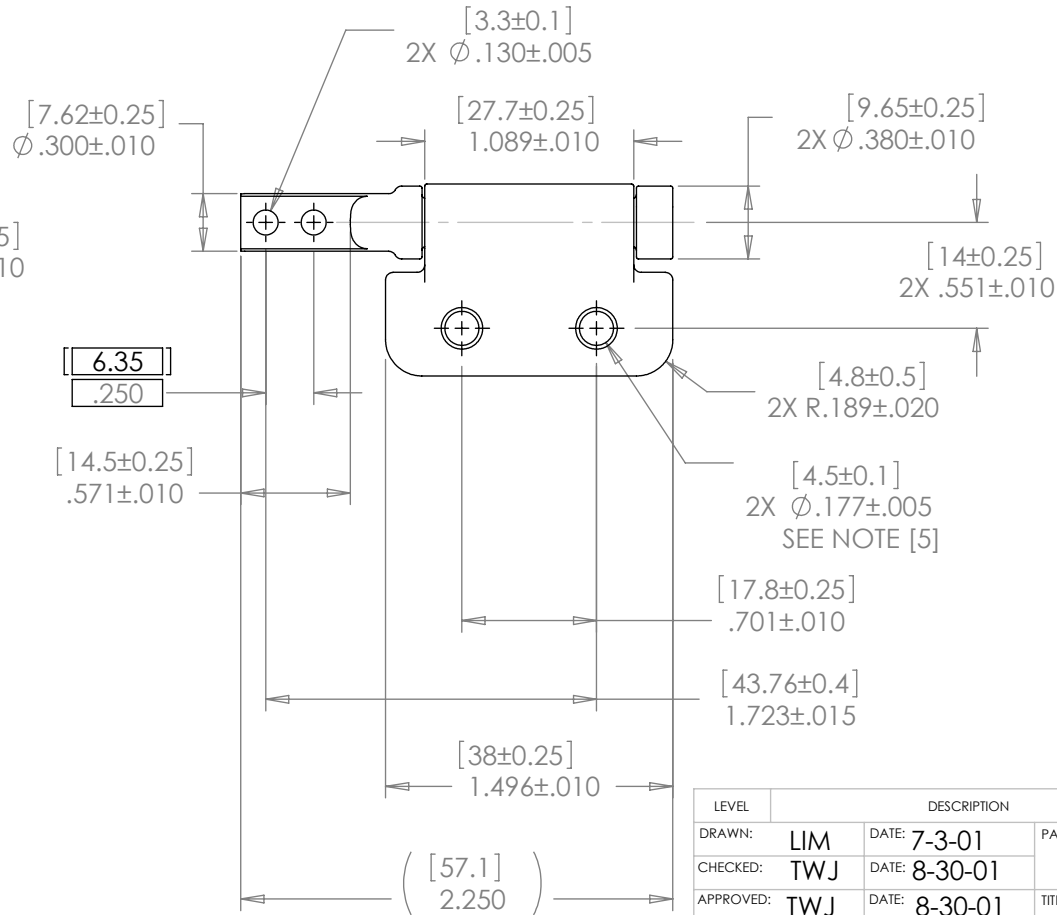
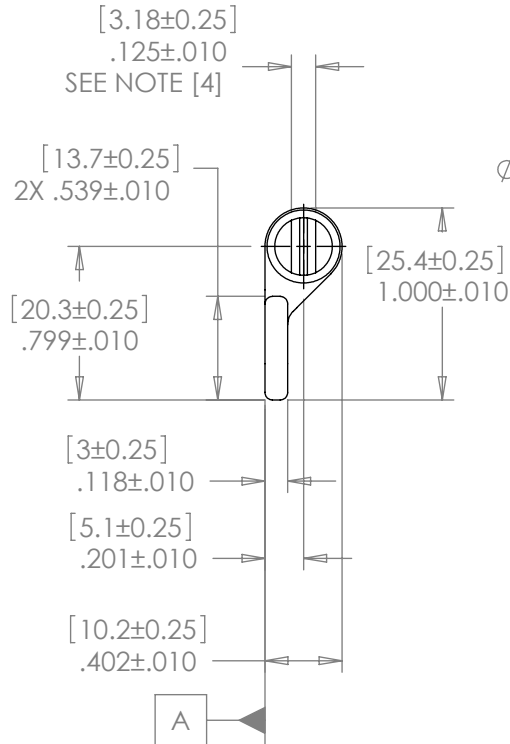


NOTES: 1.

| TORQUE | PLAIN | BLACK |
|----------------------|----------|----------|
| [INCHES] mm | PART NO. | PART NO. |
| [0] Lb-in 0.0 Nm | 33-000 | 33-100 |
| [3.9] Lb-in 0.44 Nm | 33-004 | 33-104 |
| [6.9] Lb-in 0.78 Nm | 33-008 | 33-108 |
| [10.8] Lb-in 1.22 Nm | 33-012 | 33-112 |
| [13.9] Lb-in 1.57 Nm | 33-016 | 33-116 |
| [17.8] Lb-in 2.01 Nm | 33-020 | 33-120 |
| [20.8] Lb-in 2.35 Nm | 33-024 | 33-124 |
| [24.7] Lb-in 2.79 Nm | 33-030 | 33-130 |

- TORQUE TOLERANCE: $\pm 20\%$
- LIFE: 20,000 CYCLES WHEN DUTY CYCLE IS LESS THAN 10% AND ROTATIONAL SPEED IS LESS THAN 100 RPM. 30 SECONDS MAXIMUM CONTINUOUS ACTUATION.
- FLAT TO BE ORIENTED $\pm 5^\circ$ WITH RESPECT TO DATUM A AS SHOWN.
- DESIGNED TO ACCEPT M4 OR #8 SCREW OR EQUIVALENT.
- USER MUST DETERMINE FITNESS FOR USE IN APPLICATION.



SPECIFICATIONS SUBJECT TO CHANGE

INTERPRET PRINT PER
ASME Y14.5M-1994
THIS PRINT IS THE
CONFIDENTIAL PROPERTY
OF REELL PRECISION MFG.
THIRD ANGLE PROJECTION



REELL PRECISION MANUFACTURING
1259 WILLOW LAKE BOULEVARD
SAINT PAUL, MINNESOTA 55110-5103, USA

| LEVEL | DESCRIPTION | DRAWN | DATE | APPROVED |
|-------------------|---------------|--------------------------------|------|--------------|
| DRAWN: LIM | DATE: 7-3-01 | PART NO: 33-XXX | | |
| CHECKED: TWJ | DATE: 8-30-01 | TITLE: POSITIONING HINGE, LEFT | | |
| APPROVED: TWJ | DATE: 8-30-01 | DESCRIPTION: PHB SERIES | | |
| REVISED: 12-13-07 | DIMS: [mm]IN | REV: F | | |
| SCALE: 1:1 | | DO NOT SCALE DRAWING | | SHEET 1 OF 1 |