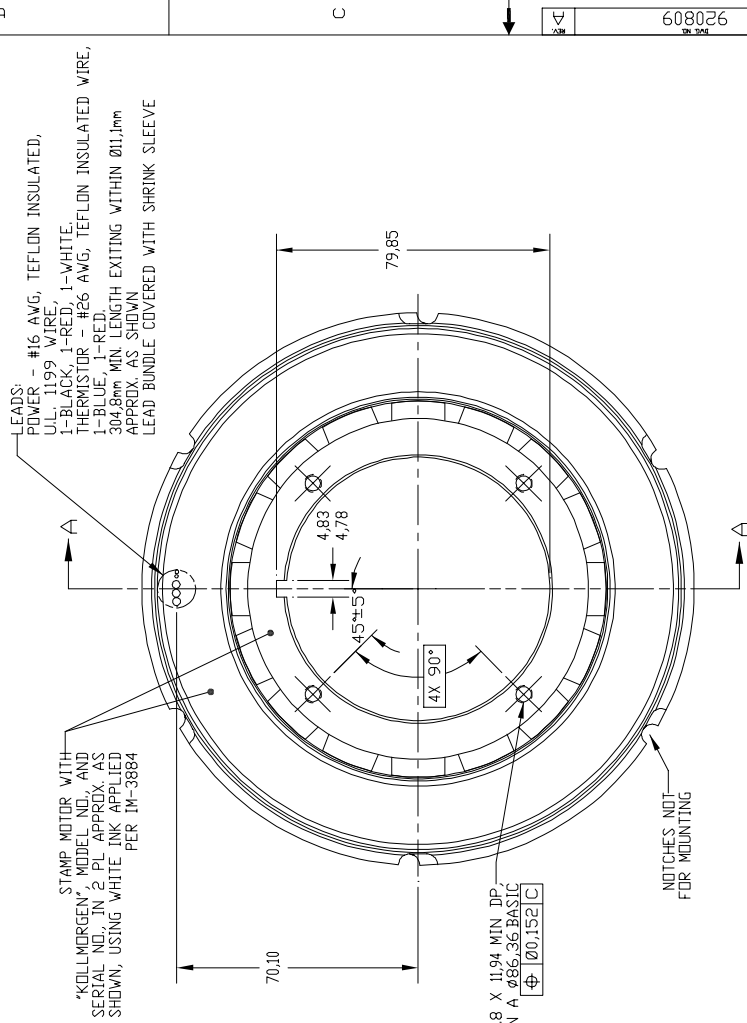
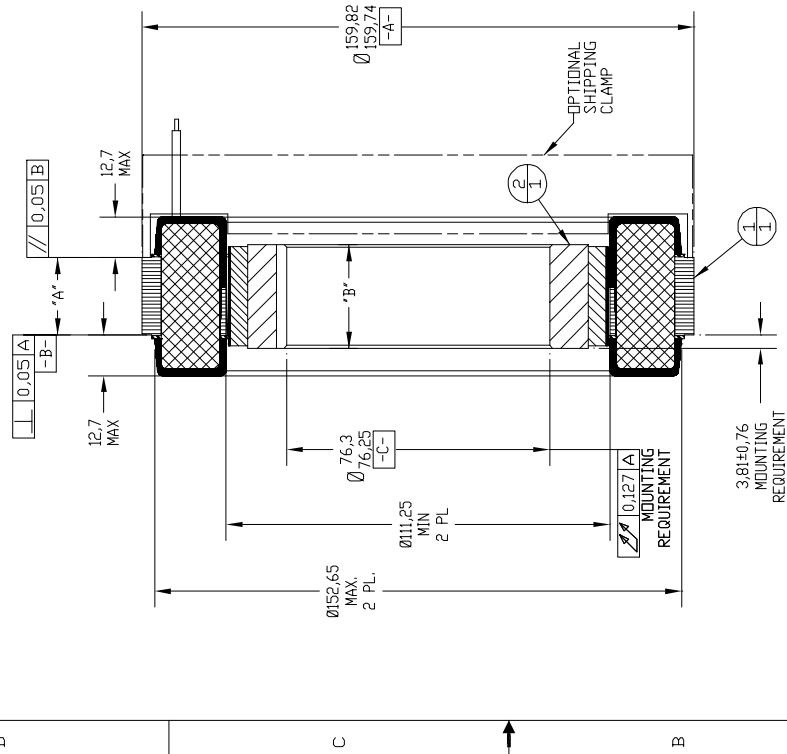


REV	ECN NO.	REVISION DESCRIPTION	DATE	APPROVED

- NOTES:
- FOR A C.W. ROTATION, AS VIEWED FROM LEAD END, ENERGIZE PER EXCITATION SEQUENCE TABLE.
  - MINIMUM HOUSING SHOULDER Ø154.69mm, BOTH SIDES.
  - MAXIMUM SHAFT SHOULDER Ø97.54mm, BOTH SIDES.
  - MOTOR SHIPPED AS SHOWN WITH AIRGAP SPACERS INSTALLED.
  - REFER TO KOLLMORGEN FRAMELESS MOTOR INSTALLATION GUIDE FOR MOUNTING INSTRUCTIONS.
  - ADHESIVE BACKED NAMEPLATE SUPPLIED WITH MOTOR. CUSTOMER TO INSTALL NAMEPLATE ON MACHINE NEAR MOTOR FOR U.L. COMPLIANCE.



WARNING:  
FIELD ASSEMBLY HAS HIGH ENERGY MAGNETS. LEAVE AIRGAP SPACERS IN PLACE UNTIL MOTOR IS MOUNTED. IF FIELD ASSEMBLY IS REMOVED FROM ARMATURE, USE EXTREME CAUTION WHEN HANDLING AND RE-ASSEMBLING. PART DAMAGE AND BODILY INJURY MAY OCCUR.

TABLE 1

MODEL NUMBER	F/FH4305	F/FH4309	F/FH4318
DIM *A*	11.43 10.41	22.86 21.84	45.72 44.70
DIM *B*	18.54	29.97	52.83
FIELD ASSY	9233317-05	9233317-09	9233317-18
ARMATURE ASSY (480 VAC)	C-920816-4305-X	C-920816-4309-X	C-920816-4318-X
ARMATURE ASSY (230 VAC)	C-920813-4305-X	C-920813-4309-X	C-920813-4318-X

POWER CONNECTION

STEP	PHASE *A* BLACK	PHASE *B* RED	PHASE *C* WHITE
1	+	-	-
2	-	+	-
3	-	-	+
4	+	+	-
5	-	-	+
6	-	-	+

EXCITATION SEQUENCE TABLE

Pro/Engineer Drawing	
Pro/E Model File Rev	
Pro/E Model File	D:\KOLLMORGEN\FIELD
Pro/E Drawing Name	920809
Pro/E Model Type	ASSEMB

LIST OF PARTS

ITEM QTY	IDENTIFYING NO.	DESCRIPTION
2	1	SEE TABLE FIELD ASSEMBLY
1	1	SEE TABLE ARMATURE ASSEMBLY, MACHINED

UNLESS OTHERWISE SPECIFIED REMOVE ALL SHARP EDGES AND BREAK ALL SHARP EDGES XXX DECIMAL PLACES 40.99 ANGULAR DIMENSIONS 11°

DO NOT SCALE DRAWING USE DIMENSIONS ONLY INTERPRET GEOMETRIC SYMBOLS PER ANSI Y14.5M-1982

SCALE	1:1
DATE	
DESIGNER	
CHECKED BY	
APPROVED BY	

ESCROW NO. 11384  
DWG. NO. 920809.MM  
REV A

SCALE: 1:1 JOB NO. 920809.MM SHEET 1 OF 1

GOLDLINE DDR  
ROBERTSON, VIRGINIA  
1-800-775-8700 (1-800-777-3786)

OUTLINE  
F/FH43XX