

1 2 3 4

REV	EEN NO.	DESCRIPTION	DATE	APPROVED
B	306138	SEE ECC RD	6/8/04	

LEADS - #14 AVG. TEFLON INSULATED, UL 1199 WIRE
 1-BLACK, 1-RED, 1-WHITE
 THERMISTOR - #26 AVG. TEFLON INSULATED WIRE, 1-BLUE, 1-RED.
 304.8mm MIN. LENGTH EXITING WITHIN Ø11.1mm APPROX. AS SHOWN
 LEAD BUNDLE COVERED WITH SHRINK SLEEVE.

- NOTES:
- FOR A C.W. ROTATION, AS VIEWED FROM LEAD END, ENERGIZE PER EXCITATION SEQUENCE TABLE.
 - MINIMUM HOUSING SHOULDER Ø316.48mm, BOTH SIDES.
 - MAXIMUM SHAFT SHOULDER Ø181.1mm.
 - MOTOR SHIPPED AS SHOWN WITH AIRGAP SPACERS INSTALLED. REFER TO KOLLMOERGEN FRAMELESS MOTOR INSTALLATION GUIDE FOR MOUNTING INSTRUCTIONS.
 - ADHESIVE BACKED NAMEPLATE SUPPLIED WITH MOTOR. CUSTOMER TO INSTALL NAMEPLATE ON MACHINE NEAR MOTOR FOR UL COMPLIANCE.

STAMP MOTOR WITH "KOLLMOERGEN", MODEL NO. AND SERIAL NO. IN 2 PL APPROX. AS SHOWN, USING WHITE INK APPLIED PER IM-3884.

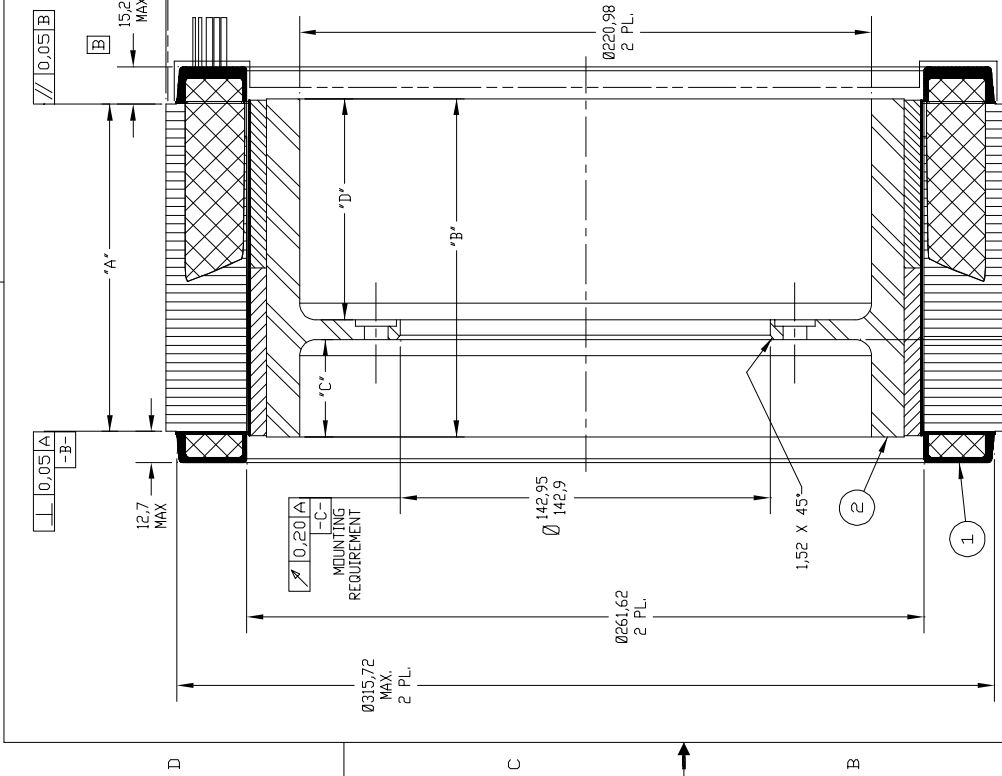


TABLE 1

MODEL NUMBER	F/FH0225	F/FH0250	F/FH02100
DIM 'A'	63.5	127.0	254.00
DIM 'B'	62.48	125.98	252.98
DIM 'C'	66.04	130.81	260.35
DIM 'D'	37.13	37.69	113.00
DIM 'E'	21.29	85.50	131.72
DIM 'F'	35.61	35.53	109.58
DIM 'F'	2.54	2.54	10.67
FIELD ASSY	C-920555	C-920556	C-920557
ARMATURE ASSY	C-920819-10225	C-920819-10250C	C-920819-102100

SECTION A-A

STEP	MOUNTING REQUIREMENT		POWER CONNECTION	
	PHASE 'A' BLACK	PHASE 'B' RED	PHASE 'C' WHITE	PHASE 'C' WHITE
1	+	-	-	-
2	+	+	-	-
3	-	+	-	-
4	-	-	+	+
5	-	-	-	+
6	-	-	-	+

EXCITATION SEQUENCE TABLE

Pro/Engineer Drawing	
Pro/E Model File	D:\KOLLMOERGEN\FIELD
Pro/E Drawing Name	920812
Pro/E Model Type	ASSEMB

WARNING:
 FIELD ASSEMBLY HAS HIGH ENERGY MAGNETS.
 LEAVE AIRGAP SPACERS IN PLACE UNTIL MOTOR IS MOUNTED.
 IF FIELD ASSEMBLY IS REMOVED FROM ARMATURE,
 USE EXTREME CAUTION WHEN HANDLING AND
 RE-ASSEMBLING. PART DAMAGE AND
 BODILY INJURY MAY OCCUR.

ITEM QTY	IDENTIFYING NO.	DESCRIPTION
2	1	SEE TABLE
1	1	SEE TABLE

LIST OF PARTS

KOLLMOERGEN		GOLLINE DDR	
1-800-775ERVO (1-800-777-3760)		SAULTER, VIRGINIA	
OUTLINE		F/FH02XXX	
ESC	SIZE	DWG. NO.	REV
10/23/02	C	920812.MM	B
11/30/02			

1 2 3 4